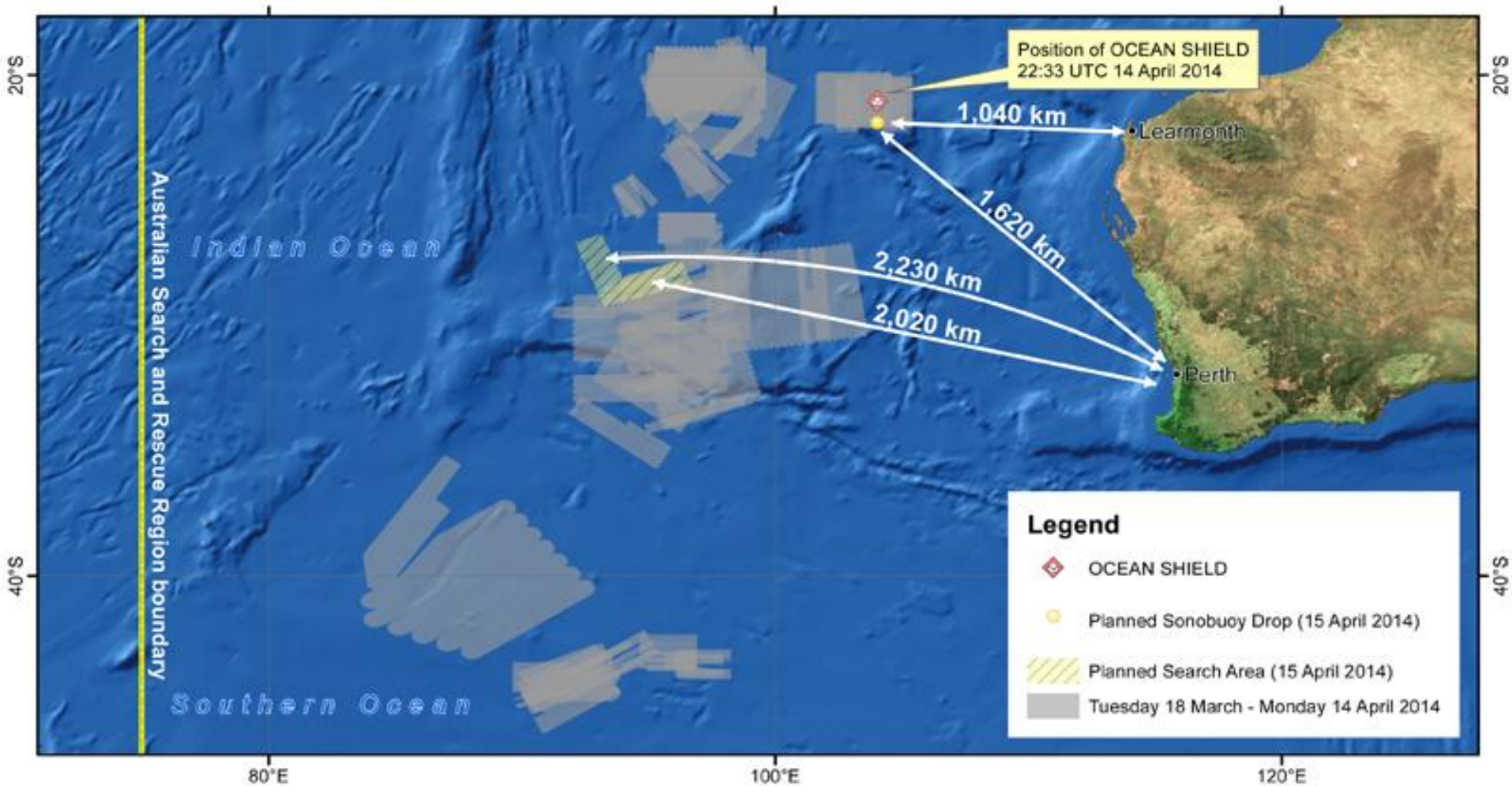


Cooperation and Collaboration in the search for MH370

Captain Richard Boulton, RAN
Director Navy International Engagement
22 May14



INCIDENT 2014/1475 SEARCH FOR MALAYSIA AIRLINES FLIGHT MH370 AREA SEARCHED



Map prepared: 15 April 2014



UNCLASSIFIED



Australian Government
Department of Defence
Intelligence & Security

Australia to Europe Comparison



Scale at A4 - 1:20,000,000

Dimensions scaled from this map will be approximate only.

-  European Countries
-  Non-European Countries
-  Australia

This product is for orientation and briefing purposes only. Political boundaries and place names are not necessarily authoritative.

Projection: Albers Equal Area Conic
Datum: WGS84
Sources: VMAP0

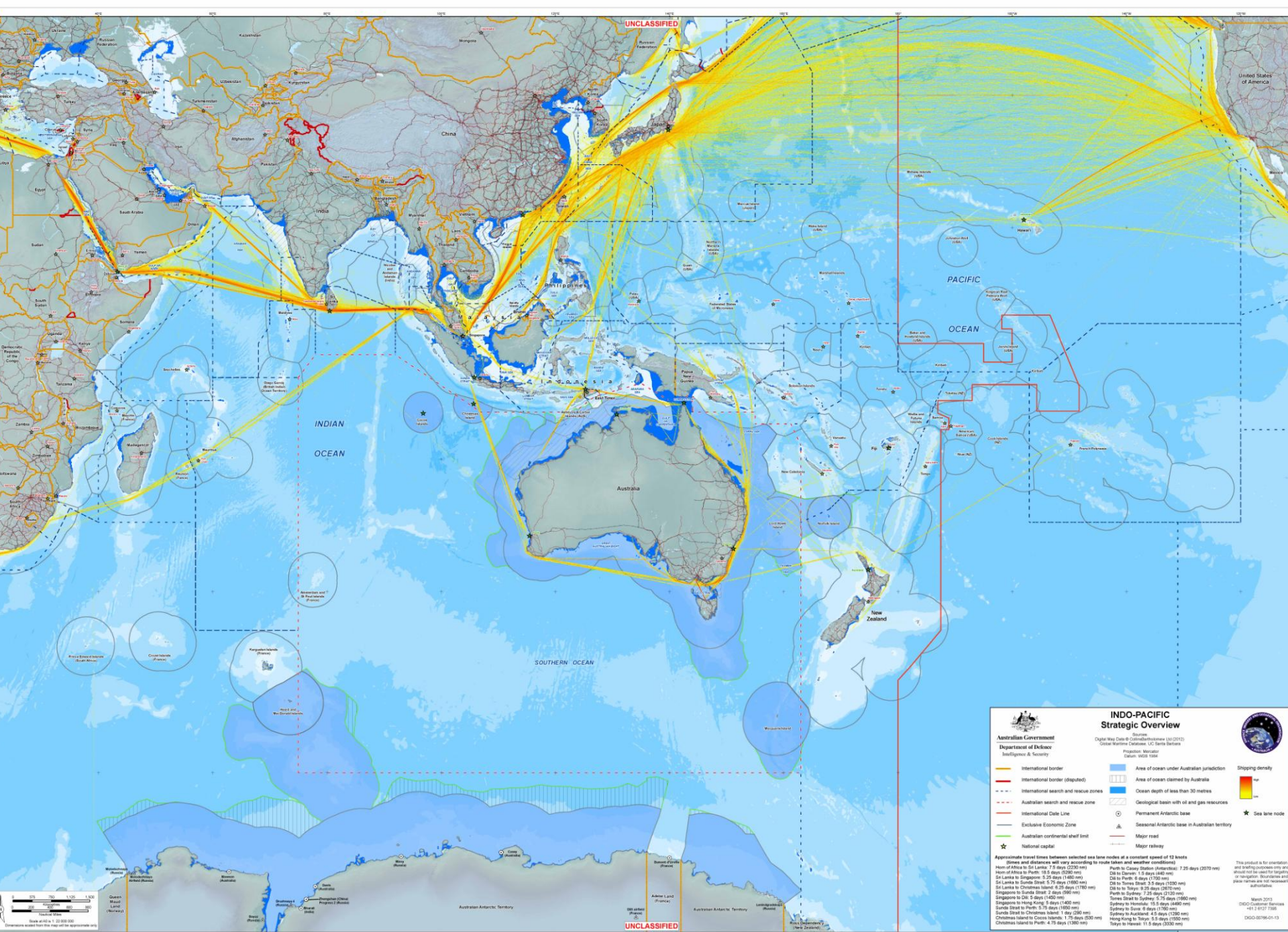
March 2011
DIGO Collection Strategies
(02) 6127 7146



DIGO-1035-01-11

UNCLASSIFIED





UNCLASSIFIED

United States of America

PACIFIC OCEAN

INDIAN OCEAN

SOUTHERN OCEAN

UNCLASSIFIED

Australian Government
Department of Defence
Intelligence & Security

INDO-PACIFIC Strategic Overview

Source: Digital Map Data © Ordnance Survey Ltd (2013); Global Maritime Database; U.S. State Dept. Products; Maritime Cadam; WGS 1984

This product is for operation and trading purposes only and should not be used for navigation or navigation, broadcasting and other purposes without the prior written consent of the Australian Government.

March 2013
DGO Customer Services
+61 8 1372 7338
DGO 00796-01-13

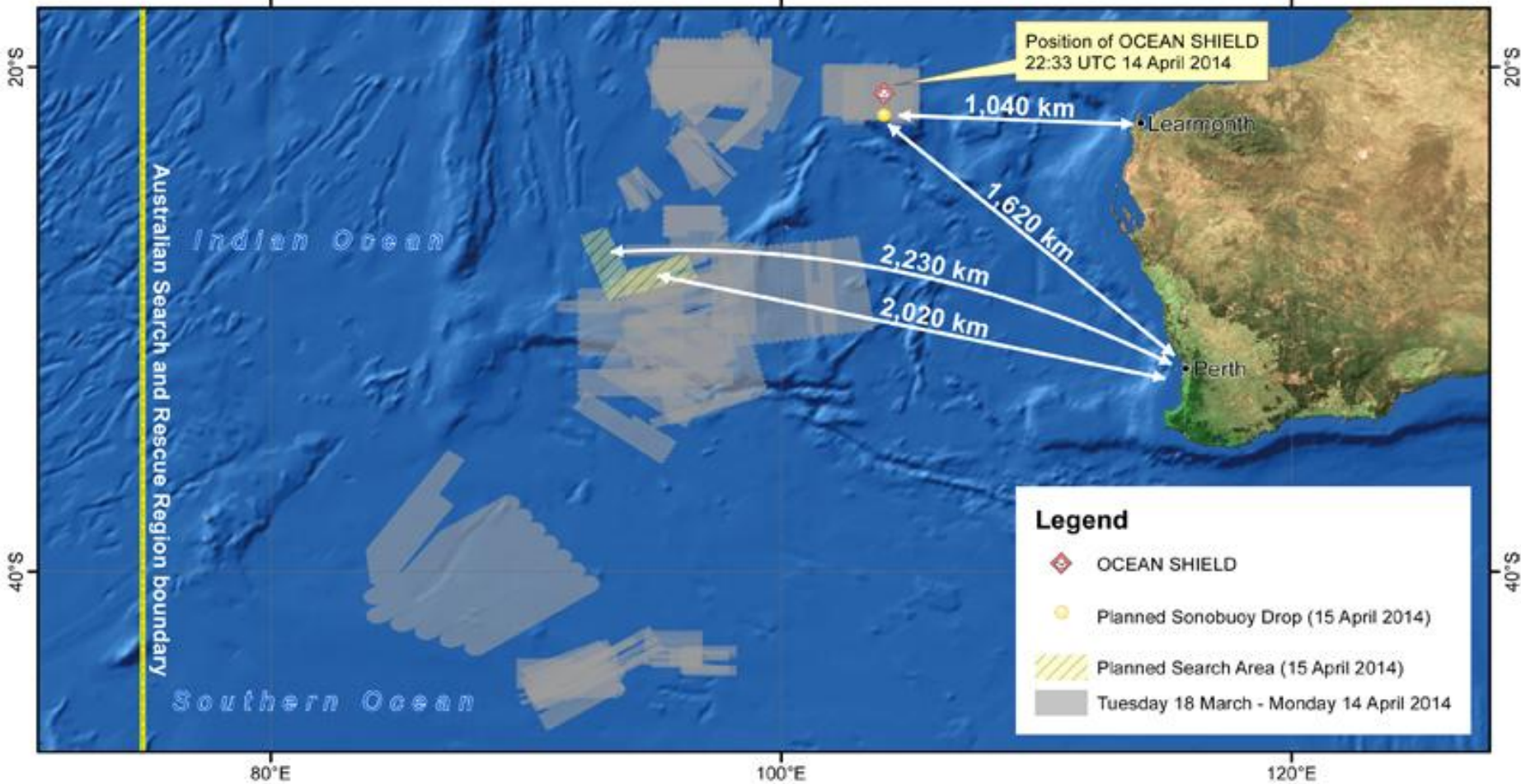
<ul style="list-style-type: none"> — International border — International border (disputed) International search and rescue zones Australian search and rescue zone International Date Line Exclusive Economic Zone Australian continental shelf limit ★ National capital 	<ul style="list-style-type: none"> Area of ocean under Australian jurisdiction Area of ocean claimed by Australia Ocean depth of less than 50 metres Geological basin with oil and gas resources Permanent Antarctic base Seasonal Antarctic base in Australian territory — Major road — Major railway 	<p>Shipping density</p> <p>★ Sea line route</p>
---	---	---

Approximate travel times between selected sea line routes at a consistent speed of 12 knots (times and distances will vary according to route taken and weather conditions)
 Horn of Africa to Sri Lanka: 7.5 days (2250 nm) Perth to Casey Station (Antarctica): 7.25 days (2070 nm)
 Horn of Africa to Perth: 10.5 days (3200 nm) Dili to Darwin: 1.5 days (480 nm)
 Sri Lanka to Singapore: 3.25 days (1480 nm) Dili to Perth: 4 days (1250 nm)
 Sri Lanka to Sunda Strait: 5.75 days (1860 nm) Dili to Timor Strait: 3.5 days (1100 nm)
 Sri Lanka to Christmas Island: 6.25 days (1700 nm) Dili to Tokyo: 8.25 days (2870 nm)
 Singapore to Sunda Strait: 2 days (560 nm) Tokyo to Sydney: 7.25 days (2120 nm)
 Singapore to Ok. 5 days (1400 nm) Tokyo Strait to Sydney: 5.75 days (1900 nm)
 Singapore to Hong Kong: 6 days (1400 nm) Sydney to Honolulu: 15.5 days (4490 nm)
 Sunda Strait to Perth: 5 days (1400 nm) Sydney to Osaka: 8 days (2300 nm)
 Sunda Strait to Christmas Island: 6 days (1600 nm) Sydney to Auckland: 4.5 days (1300 nm)
 Christmas Island to Cook Islands: 1.75 days (530 nm) Hong Kong to Tokyo: 5.5 days (1500 nm)
 Christmas Island to Perth: 4.75 days (1380 nm) Tokyo to Hawaii: 11.5 days (3330 nm)





INCIDENT 2014/1475 SEARCH FOR MALAYSIA AIRLINES FLIGHT MH370 AREA SEARCHED



Legend

- OCEAN SHIELD
- Planned Sonobuoy Drop (15 April 2014)
- Planned Search Area (15 April 2014)
- Tuesday 18 March - Monday 14 April 2014

Map prepared: 15 April 2014



